



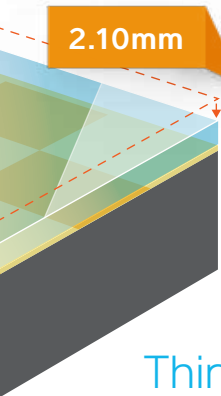
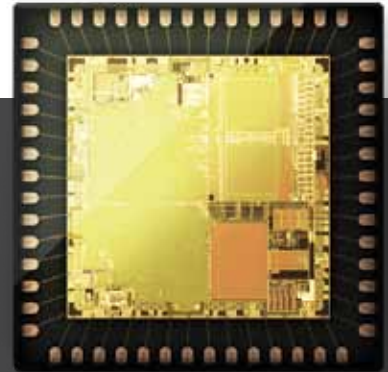
# Atmel maXTouch S Series Touchscreen Controllers

Create What You've Always Imagined



# Are You Ready to Design a New Breed of Mobile Products?

Have you imagined creating a mobile product delivering the perfect touch user experience—only to be stifled by technology limitations? Meet Atmel's **maXTouch® S Series** devices, the newest in our capacitive touchscreen controller family.



**0.88mm**  
58% thinner touch sensor stacks

## Thin, Unshielded Sensors

Integrate shieldless touch-on-lens and on-cell sensors into your designs with Atmel® **SlimSensor™ Technology**, which combats display noise up to 3.5V.



## Active Stylus Support

Provide support for thin passive stylus and Atmel's **maXStylus™** active stylus solution for both smartphones and tablets.

## Precise Touch Processing

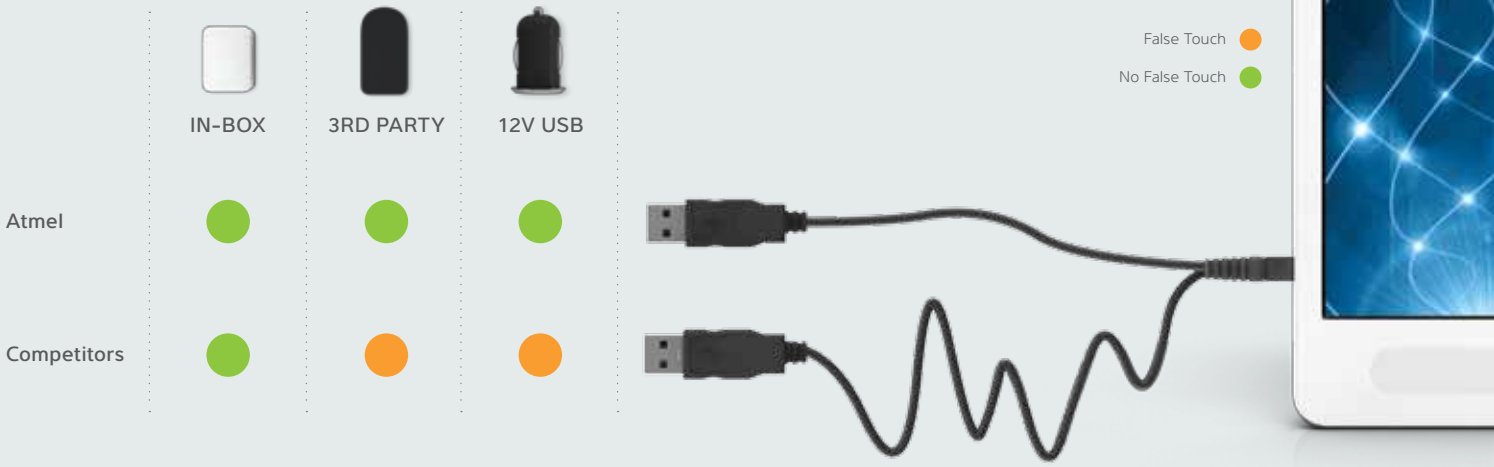
Deliver more precise finger tracking, higher touch fidelity and more sophisticated rejection of unintended touches through enhanced touch processing algorithms.

## Faster Time to Market

Save design time because you won't need to do any firmware development to accommodate a specific display, charger or stackup.

## Combat Charger Noise

Get high responsiveness and linearity while combating extreme charger noise as harsh as 240Vpp with Atmel **maXCharger™ Technology**. Your customers will be able to use any charger with their device, without any touch performance impact.



## From Smartphones to Tablets and Beyond

The maXTouch S Series includes these devices:



### mXT224S

Uncompromised performance for Android® 4.0 Ice Cream Sandwich and Windows® Phone 8 smartphones from 3.5" to 4.3"



### mXT336S

The highest performance controller for the next generation of superphones from 4.3" to 5.5"



### mXT1664S

A single chip for high-performance, 10" and above tablets, with support for Windows 8 and Atmel maXStylus™ active stylus solution.

## Accelerated Performance

Critical digital signal processing (DSP) functions are implemented in optimized hardware blocks in the devices rather than in firmware. This hardware acceleration lets you take advantage of touch performance enhancements while still delivering devices with lower power and increased battery life.

The combination of SlimSensor and maXCharger technologies results in superior responsiveness and accuracy—without compromise to speed, jitter or power consumption, even in noisy conditions.

## From Imagination to Reality

Intelligent touch processing algorithms. Unparalleled noise suppression. High responsiveness. Pinpoint precision. Now you have the touchscreen controller technology you need to create what you've always imagined. Ready to get started? Get more details at [www.atmel.com/maXTouchS](http://www.atmel.com/maXTouchS).



Enabling Unlimited Possibilities™

**Atmel Corporation**

2325 Orchard Parkway  
San Jose, CA 95131  
USA

**Tel:** (+1) (408) 441-0311

**Fax:** (+1) (408) 487-2600

www.atmel.com

**Atmel Asia Limited**

Unit 01-5 & 16, 19F  
BEA Tower, Millennium City 5  
418 Kwun Tong Road  
Kwun Tong, Kowloon  
HONG KONG

**Tel:** (+852) 2245-6100

**Fax:** (+852) 2722-1369

**Atmel Munich GmbH**

Business Campus  
Parking 4  
D-85748 Garching b. Munich  
GERMANY

**Tel:** (+49) 89-31970-0

**Fax:** (+49) 89-3194621

**Atmel Japan G. K.**

16F Shin-Osaki Kangyo Bldg.  
1-6-4 Osaki, Shinagawa-ku  
Tokyo 141-0032  
JAPAN

**Tel:** (+81) (3) 6417-0030

**Fax:** (+81) (3) 6417-0370

© 2012 Atmel Corporation. All rights reserved. / Rev.: 8477A-maXTouch S Series-E-US-01/12

Atmel®, Atmel logo and combinations thereof, and others are registered trademarks or trademarks of Atmel Corporation or its subsidiaries. Other terms and product names may be trademarks of others.

Disclaimer: The information in this document is provided in connection with Atmel products. No license, express or implied, by estoppel or otherwise, to any intellectual property right is granted by this document or in connection with the sale of Atmel products. EXCEPT AS SET FORTH IN THE ATMEL TERMS AND CONDITIONS OF SALES LOCATED ON THE ATMEL WEBSITE, ATMEL ASSUMES NO LIABILITY WHATSOEVER AND DISCLAIMS ANY EXPRESS, IMPLIED OR STATUTORY WARRANTY RELATING TO ITS PRODUCTS INCLUDING, BUT NOT LIMITED TO, THE IMPLIED WARRANTY OF MERCHANTABILITY, FITNESS FOR A PARTICULAR PURPOSE, OR NON-INFRINGEMENT. IN NO EVENT SHALL ATMEL BE LIABLE FOR ANY DIRECT, INDIRECT, CONSEQUENTIAL, PUNITIVE, SPECIAL OR INCIDENTAL DAMAGES (INCLUDING, WITHOUT LIMITATION, DAMAGES FOR LOSS AND PROFITS, BUSINESS INTERRUPTION, OR LOSS OF INFORMATION) ARISING OUT OF THE USE OR INABILITY TO USE THIS DOCUMENT, EVEN IF ATMEL HAS BEEN ADVISED OF THE POSSIBILITY OF SUCH DAMAGES. Atmel makes no representations or warranties with respect to the accuracy or completeness of the contents of this document and reserves the right to make changes to specifications and products descriptions at any time without notice. Atmel does not make any commitment to update the information contained herein. Unless specifically provided otherwise, Atmel products are not suitable for, and shall not be used in, automotive applications. Atmel products are not intended, authorized, or warranted for use as components in applications intended to support or sustain life.